



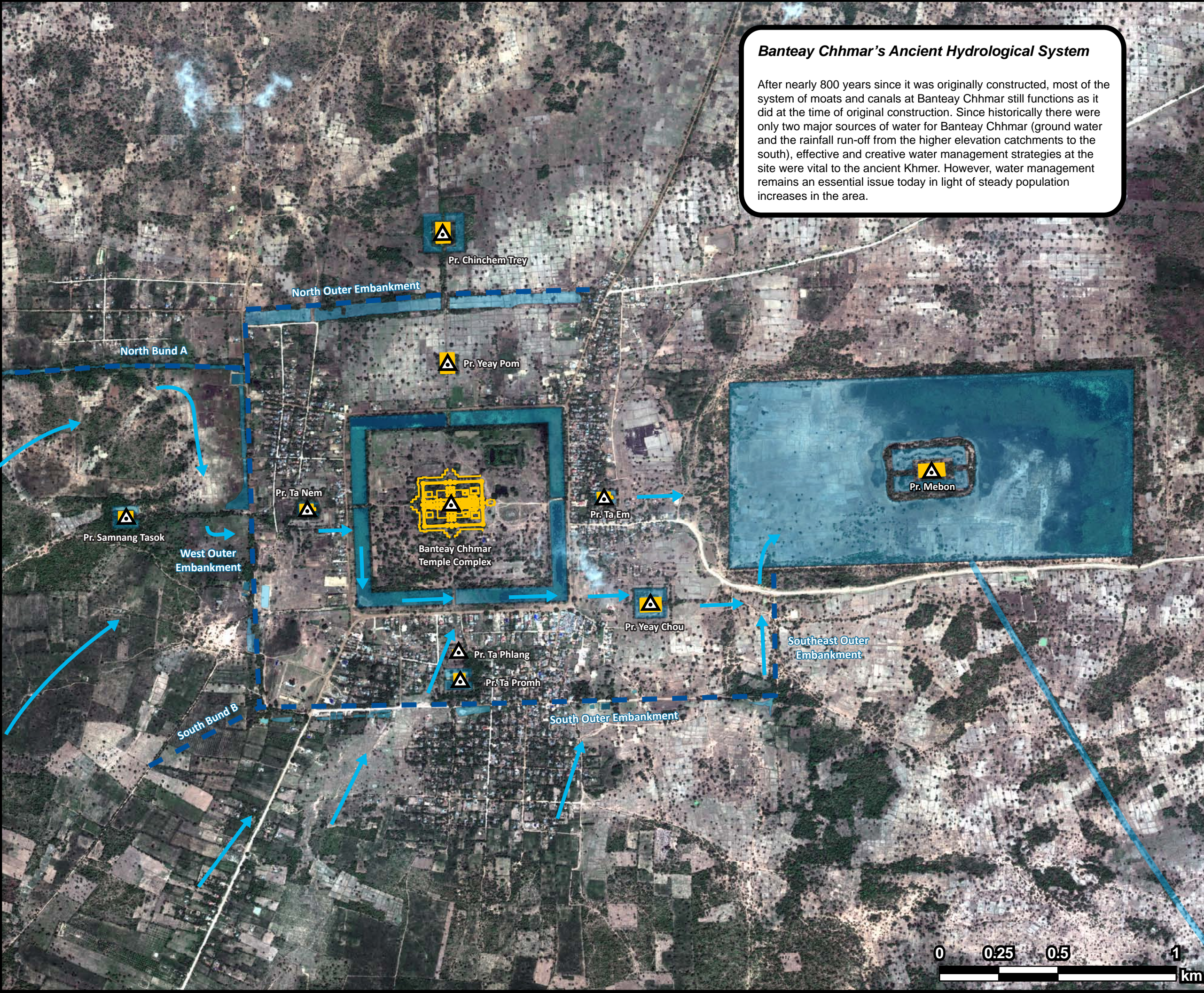
Banteay Chhmar Cambodia

Site Significance - Ancient Hydrological System



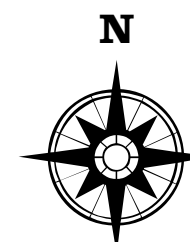
Banteay Chhmar's Ancient Hydrological System

After nearly 800 years since it was originally constructed, most of the system of moats and canals at Banteay Chhmar still functions as it did at the time of original construction. Since historically there were only two major sources of water for Banteay Chhmar (ground water and the rainfall run-off from the higher elevation catchments to the south), effective and creative water management strategies at the site were vital to the ancient Khmer. However, water management remains an essential issue today in light of steady population increases in the area.



Map Legend

- Ancient Khmer Temple
- Hydrological Feature
- Historic Moat / Canal
- Historic Embankment / Bundh
- Archaeological Features
- Surface Water Flow Direction



1:15,000

