



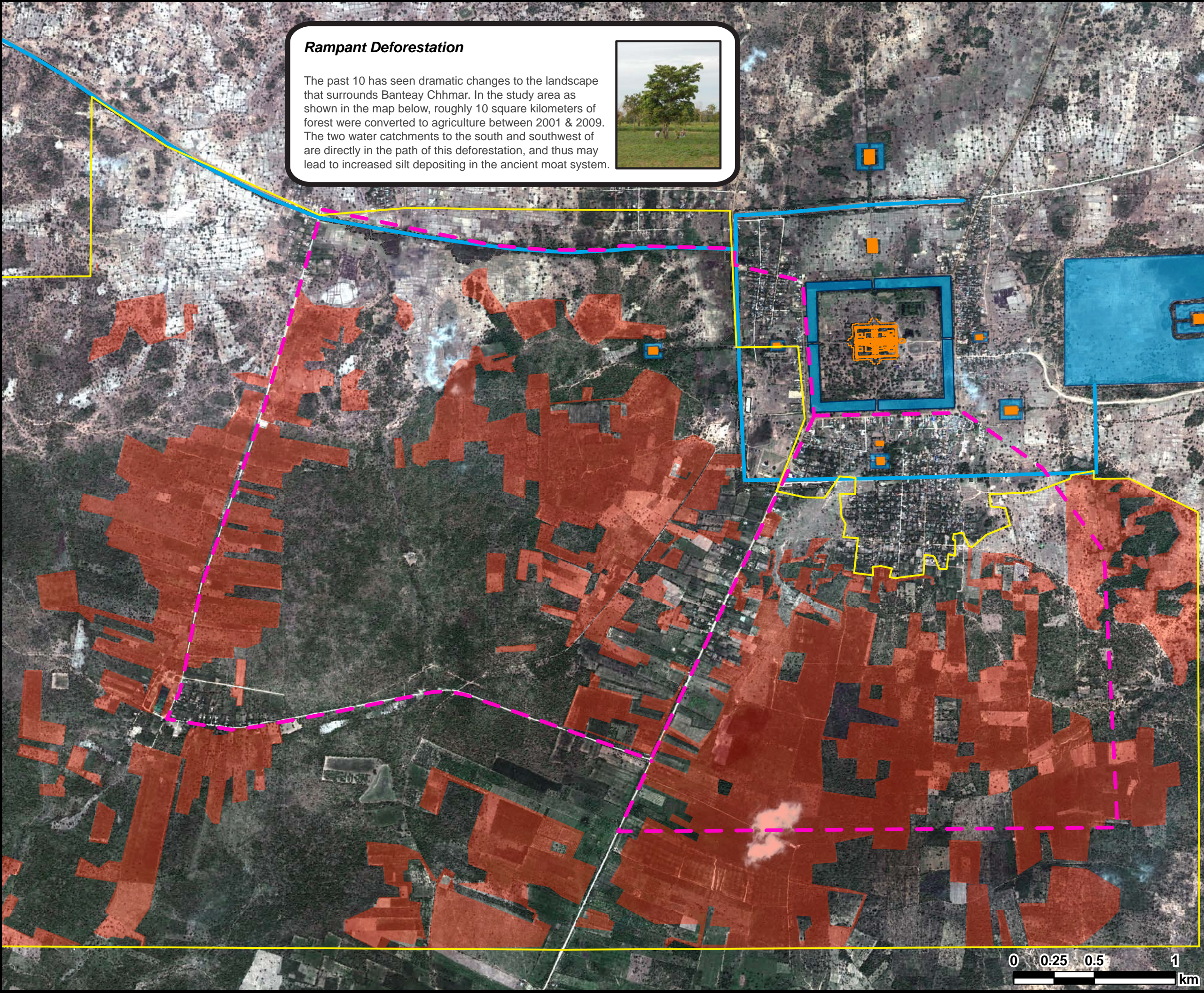
Banteay Chhmar Cambodia

Site Significance - Natural Environment & Threats



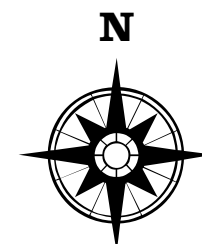
Rampant Deforestation

The past 10 has seen dramatic changes to the landscape that surrounds Banteay Chhmar. In the study area as shown in the map below, roughly 10 square kilometers of forest were converted to agriculture between 2001 & 2009. The two water catchments to the south and southwest of are directly in the path of this deforestation, and thus may lead to increased silt depositing in the ancient moat system.



Map Legend

- Ancient Khmer Temple
- Deforestation Between 2001-2009
- Study Area of Deforestation
- Hydrological Feature
- Historic Moat / Canal
- Water Catchments
- Ancient Archaeological Features



1:22,000

