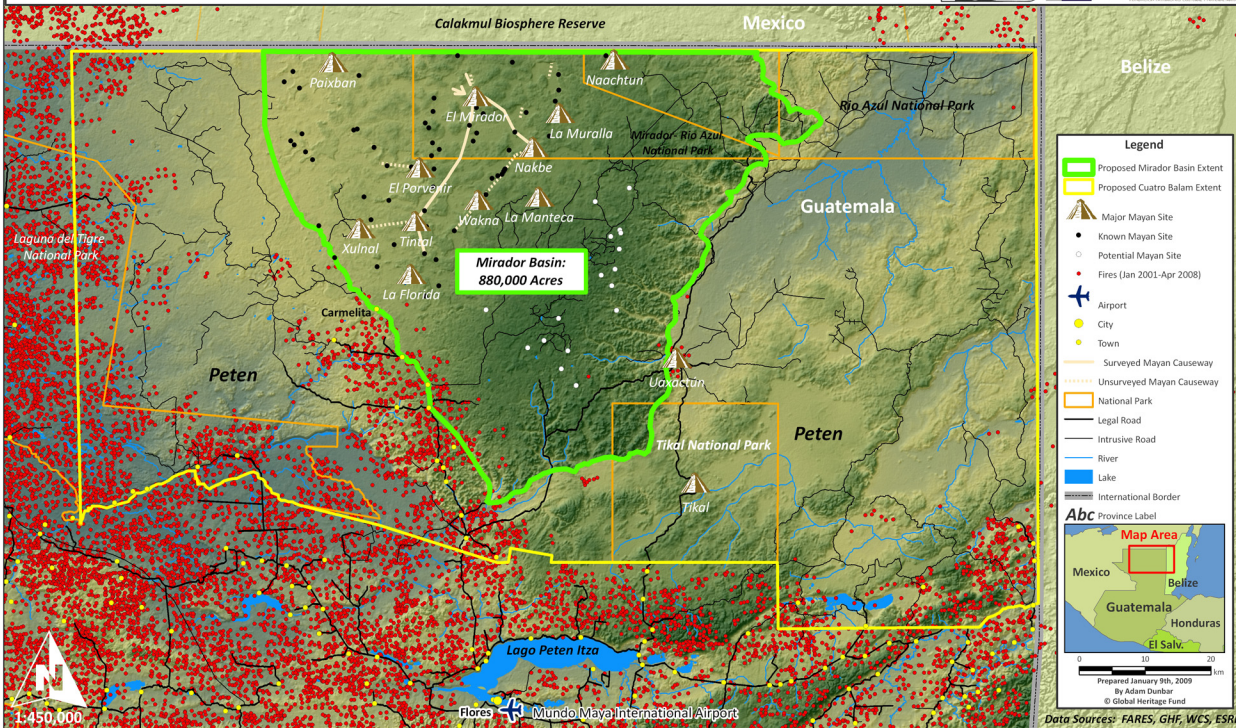


Mirador Basin, Guatemala

Proposed Protected Areas and Major Archaeological Sites

Project Partners:



Mirador Basin:
880,000 Acres

Legend

- Proposed Mirador Basin Extent
- Proposed Cuatro Balam Extent
- Major Mayan Site
- Known Mayan Site
- Potential Mayan Site
- Fires (Jan 2001-Apr 2008)
- Airport
- City
- Town
- Surveyed Mayan Causeway
- Unsurveyed Mayan Causeway
- National Park
- Legal Road
- Intrusive Road
- River
- Lake
- International Border
- Province Label

Abc

Map Area

0 10 20 km

Prepared January 9th, 2009
By Adam Dunbar
© Global Heritage Fund

Data Sources: FARES, GHF, WCS, ESRI