



Global Heritage Fund

## Mirador Kingdom of Kan



*World Heritage Conservation and  
Community Development*

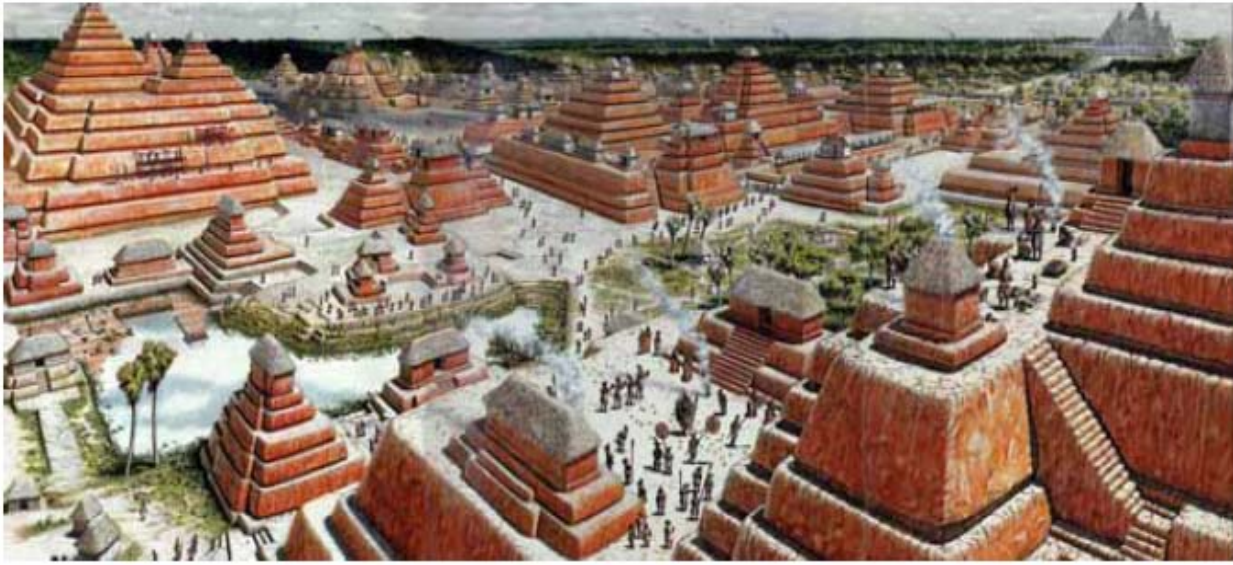
*Saving the Cradle of Maya Civilization  
in the Heart of the Maya Biosphere Reserve  
Peten, Guatemala*

November 2011

# Mirador Cultural Heritage and Nature Conservation: A New Future for the People of Guatemala

## Table of Contents

<b>Executive Summary.....</b>	<b>3</b>
<b>Threats to Mirador.....</b>	<b>6</b>
<b>GHF Mirador Progress Summary: 2010-11.....</b>	<b>7</b>
<b>GHF Mirador Conservation Funding Needs.....</b>	<b>8</b>
Guatemalan In-Country Matching Funding Secured	
Natural and Cultural Heritage Conservation	
Mirador Park Rangers - Equipment and Training	
Mapping, GIS Surveys and Publishing	
Community Development - Guide/Operator Training	
GHF Project Leadership	
<b>Conservation Objectives.....</b>	<b>11</b>
<b>Success Factors - Conservation and Park Development: Mirador and Tikal.....</b>	<b>12</b>
<b>The Next Five Years: Saving Mirador.....</b>	<b>13</b>
Site Planning and Preservation	
Community Development	
Nature and Wildlife Conservation	
U.S. Department of the Interior (DOI) Partnership	
Long-term Financial Support and IDB Funding	
Preparing for Tourism	
<b>GHF Mirador Conservation Budget 2012-2013.....</b>	<b>21</b>
<b>Conclusion and Acknowledgements.....</b>	<b>22</b>
<b>GHF Leader in Conservation: Dr. Richard Hansen, Mirador Project Director.....</b>	<b>23</b>
<b>GHF Partners in Conservation.....</b>	<b>24</b>
<b>About Global Heritage Fund.....</b>	<b>25</b>



Above: National Geographic representation of the site of El Mirador and the La Danta pyramid, believed to be the largest in the world by physical volume.

*Mirador “is a world wonder - and needs to be protected. We may be talking about the single most ambitious conservation and development project related to protected areas proposed in the Americas.”*

Roan McNab, Wildlife Conservation Society (WCS)

## Executive Summary

Global Heritage Fund (GHF) is seeking to raise \$480,000 for 2012-13 to enable the long-term sustainable preservation of the Mirador Cultural and Natural Preserve (‘Mirador’) located in the heart of the Maya Biosphere in northern Guatemala.

Mirador, the largest proposed new wilderness area north of the Amazon Basin, will protect over 800,000 acres of pristine tropical forests and wildlife habitat encompassing the oldest and largest ancient Maya cities, pyramids, temples and causeways in the Americas. Experts describe the Mirador Basin as the *Cradle of Maya Civilization*.

According to a study by the Guatemalan Foundation for the Environment (FOGUAMA), the Maya Biosphere has lost 64% of its forests in just the last 10 years. Establishing sustainable tourism in this area with active local community participation would provide economic alternatives to the currently ongoing destructive activities (e.g. illegal logging, archaeological looting, and human, wildlife and drug trafficking). This may be our last chance to protect the last remaining forests of the Maya Biosphere from total environmental catastrophe.

GHF is working with the Guatemalan government, community leaders, the Foundation for Anthropological Research and Environmental Studies (FARES), The Foundation of Cultural and Natural Maya Patrimony (PACUNAM) and the U.S. Department of the Interior (which includes the U.S. National Park Service) to create an economically sustainable cultural and natural preserve in the heart of the Maya Biosphere.

## GHF Mirador Conservation



Above: The Mirador Basin is home to an abundance of wildlife.

GHF's primary conservation goals for Mirador are:

1. Establish permanent protection for the nature, wildlife and archaeological heritage
2. Assist the Guatemalan government in securing UNESCO World Heritage designation
3. Secure an economically sustainable protected area within the next five years

Establishing the Mirador Cultural and Natural Preserve is our primary goal, which will likely incorporate 525,100 to 880,000 acres, depending whether the government of Guatemala includes the outlying areas of the surrounding mountains within the park boundaries.

Mirador's priceless ancient cities and monuments of the Preclassic Maya period are the most spectacular and unique in Central America, and Mirador is now Guatemala's leading nomination for UNESCO World Heritage Site inscription. These ancient Maya cities form the basis for a sustainable future based on a roadless cultural and natural preserve. Such a preserve has the potential to stop the destruction of the forests at its borders and to provide an alternative to the status quo of burning, logging, looting and poaching for the local communities. With new education and training initiatives and responsible development of the Mirador Cultural and Natural Preserve, GHF is assisting the local people to save their own forests and ancient cultural sites.

GHF's aim is to implement world-class conservation and master planning while achieving economic sustainability in revenues and costs within 10 years by supporting key areas of conservation, park infrastructure, training and planning in this critical period of establishing the Mirador Cultural and Natural Preserve.

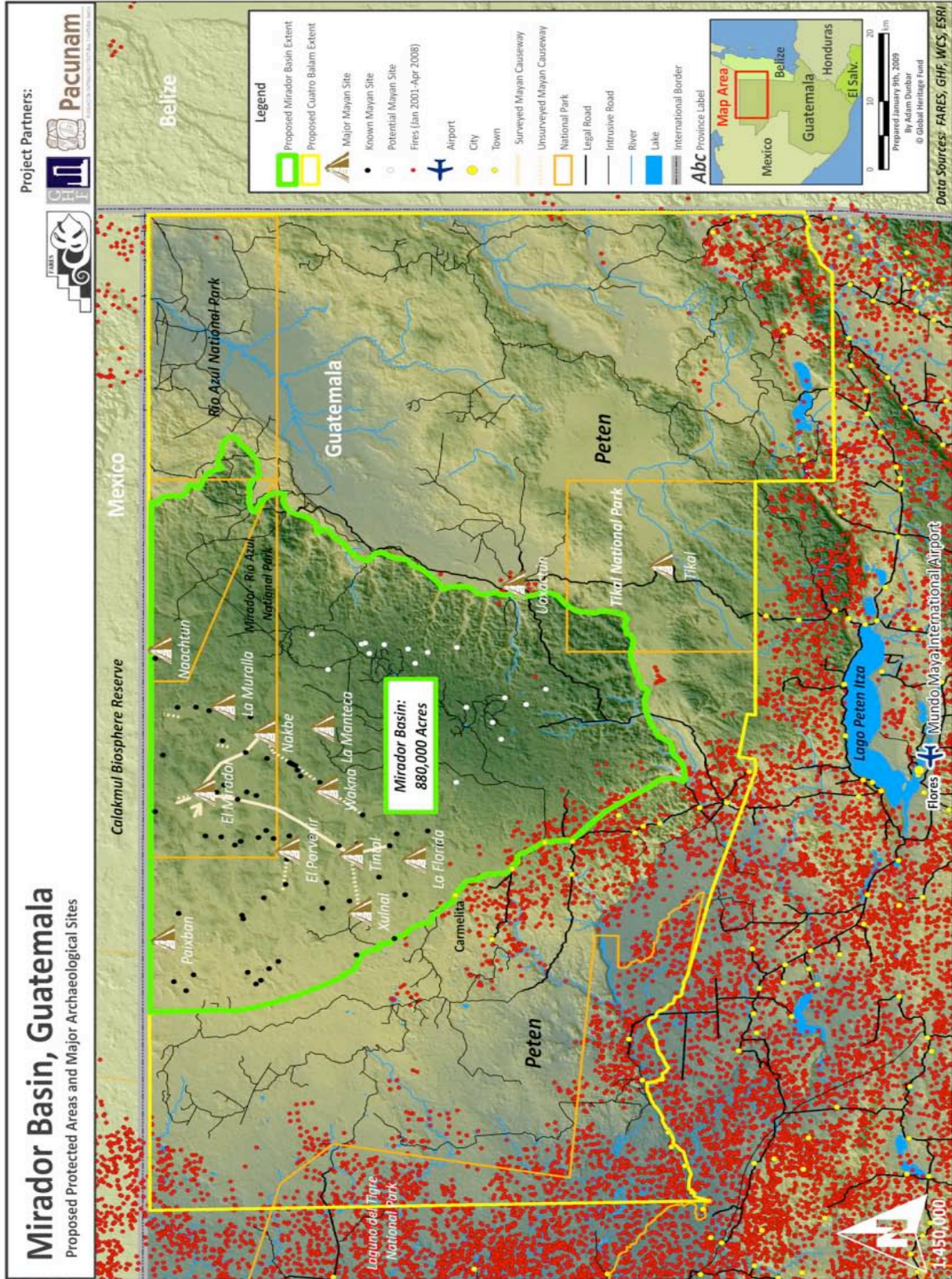
Establishment of the Mirador Cultural and Natural Preserve is based on lessons learned from the highly successful conservation and sustainable development of nearby Tikal National Park, which has been permanently protected since the 1980s. Since its inception as a national park, Tikal has had over 12 million visitors and today brings in \$260 million in tourism revenues annually, enabling strong management and protection of Tikal's forests, wildlife and archaeological heritage.

In Mirador, the potential exists to nearly triple the protected area of Tikal with the same sustainable model for cultural and natural heritage preservation.

GHF Mirador Conservation

GHF Priority Conservation Area - Mirador, Guatemala

● Major fires 2001-2008 (NASA)

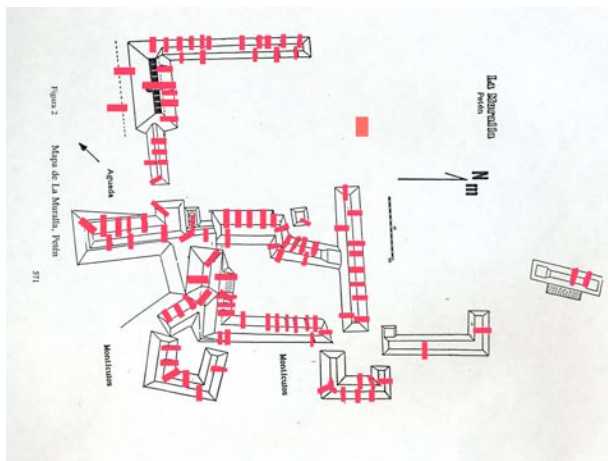




Above: Fires around the Mirador Basin pose a significant threat to the Mirador Basin's integrity.

### Threats to Mirador

Many factors threaten the archaeology and the ecology of the Mirador Basin. Drug trafficking profits are fueling a massive ranching industry which requires large areas of jungle to be cleared and has virtually destroyed the Maya Biosphere within the past five years in northern Guatemala. Forest is also cleared for agricultural purposes, generally in a slash-and-burn practice that employs fire to clear the land (see map, previous page). This practice has been so extensive, though, that the resulting smoke has closed down schools as far north as Houston, Texas, in 2003 and 2004. Logging has also had a devastating effect on the Mirador Basin as clear cutting destroys the forest and the access roads needed to remove the cut trees allow access by poachers and looters. The looters, in fact, have targeted virtually every site in the Mirador Basin, with most sites damaged or destroyed by scores of looters' trenches.



Left: Red lines indicate the location of looters' trenches at La Muralla, a site in the Mirador Basin. Right: A photograph of a looters' trench in the Mirador Basin.

## GHF Mirador Progress Summary: 2010-2011

Over the past two years, in 2010 and 2011, GHF and our partners have accomplished key milestones towards creating an economically sustainable conservation and community development program at Mirador following key steps in our *Preservation by Design*<sup>®</sup> methodology:

### Planning

The new Mirador Master Plan, published in Spanish and English, involved over 60 stakeholders and Guatemalan government ministries led by PACUNAM. The Mirador Plan will guide long-term conservation and development priorities and budget over the next decade.



### Conservation

GHF executed a \$350,000 budget for Mirador to complete major conservation of ancient Maya temples and pyramids including La Danta, Tigre and the Central Acropolis. El Mirador, the Mirador Basin's largest ancient city, is now open to the public with top quality signage.



### Community

GHF and Fundación para el Desarrollo de Guatemala (FUNDESA) secured \$1.2 million for community development and training around tourism, lodging and services at Mirador. Over 60 certified tourist guides are now working along with 90+ park rangers.



### Partnerships

GHF co-hosted the Maya Exhibition at the Quai Branly Museum in Paris this Spring with PACUNAM and the Prince Albert of Monaco Foundation. PACUNAM now has 14 members - including Samsung and Banco Occidental, which joined in 2011 - who have jointly committed co-funding of over \$2 million for Mirador.



### Global Recognition

Smithsonian magazine featured Mirador on the May cover issue and featured the newest discovery, The Popul Vuh Frescos, while Discovery Channel is featuring Mirador this Fall in its first 3D film.



### Human Impact

Hundreds of new jobs have been created now that over 3,500 visitors are using the Mirador Guide Association and local restaurants, tour operators and lodging. A new water system is now operational for the gateway village of Carmelita and the site of El Mirador.

GHF's *Preservation by Design* process and methodology have been executed well over the past six years at GHF Mirador, greatly enhancing the long-term protection of this nearly one-million-acre cultural and natural preserve in the heart of the Maya Biosphere.

## GHF Mirador Conservation



*"We have to save this place"*

- Prince Albert II of Monaco, Mirador co-funder

### GHF Mirador Conservation Funding Needs

GHF is seeking to raise \$480,000 for our work in 2012-13 to enable a holistic and integrated *Preservation by Design* program in five primary areas:

\$280,000	Natural and Cultural Heritage Conservation
\$ 60,000	Mirador Park Rangers- equipment and training
\$ 40,000	Mapping, GIS Surveys and Publishing
\$ 60,000	Community Development and Guide / Operator Training
\$ 40,000	GHF Project Leadership

The largest funding needed is for conservation work to stabilize the archaeological complex of El Mirador, Mirador's namesake and largest ancient Maya city, which will be the magnet for tourism and the centerpiece of the Mirador conservation effort. El Mirador lies within the existing El Mirador National Park at the far north of the preserve, giving it the highest chance of conservation success even if the accelerating fires burn down the rest of the area.

The existing Mirador National Park is protected today under the Constitution of Guatemala and is the focus for our investment with the U.S. Department of the Interior (U.S. National Park Service), which is deploying multiple teams of experienced park managers and experts to consult with GHF and the Guatemalan government on planning, training and park infrastructure.

### Guatemalan In-Country Matching Funding Secured

GHF has secured in-country matching funding from PACUNAM to support Mirador governmental and stakeholder planning, facilitate scientific and archaeological research, encourage sustainable development, contribute to the environmental conservation, and support Mirador's UNESCO World Heritage nomination. PACUNAM now has 14 members from the leading companies and families in Guatemala who together signed a pledge to match GHF dollar-for-dollar for Mirador conservation. This has taken four years to realize and is one of the first instances of Guatemalans ever coming together on this scale for any non-profit endeavor in their country.

## GHF Mirador Conservation



Above: Dr. Richard Hansen (right), Project Director with President Alvaro Colom at the newly discovered Popul Vuh murals at Mirador.

### **Natural and Cultural Heritage Conservation: \$280,000 over 2 years**

**Forestry.** GHF is funding the work of Dr. Cesar Casteneda, Dean of Agronomy and Environment at Del Valle University and one of the leading experts in tropical forest and flora, to undertake a comprehensive biological inventory of Mirador's five distinct forests types and thousands of unique species.

**Avian Studies.** Cornell University's Lab of Ornithology (CLO) conducted the first of many studies recording 184 species in the Mirador Basin, with 156 species noted at El Mirador and 158 recorded at Tintal. Of the 184 species, 135 were recorded at both sites, while 21 were noted only at El Mirador and 23 only at Tintal. Two bird species were discovered which had not been documented previously in Guatemala, the Caribbean Dove and Hooded Oriole, suggesting the biological importance of the Basin as a major reservoir of bird species in Guatemala and Mexico. In addition, a pair of Orange Breasted Falcons was seen on the south-west edge of the karstic ridge that surrounds the Basin. The work was conducted by renowned ornithologists Gregory F. Budney, Marshall J. Iliff and Dr. Eduardo E. Inigo-Elias.

**Jaguar Studies.** GHF supported jaguar studies conducted by the Wildlife Conservation Society (WCS) that used infrared motion detection camera traps to determine there is a high density of cats in Mirador but a surprisingly low number in La Gloria, a logging concession area. It is likely that human intrusion is reducing the numbers of cats as well as their prey. The same study in the Carmelita logging concession area revealed a jaguar concentration of 11.28 +/- 3.51 jaguars per 100km<sup>2</sup>, making it the highest concentration of jaguars in the world, exceeding that of the Cockscomb Jaguar Preserve in Belize (8.80 +/- 2.25 per 100km<sup>2</sup>).

## **GHF Mirador Conservation**

The northern part of the Mirador Basin also supports an abundance of peccaries, ocellated turkeys and white tailed deer, which may be able to accommodate the high jaguar populations found within the area.

**El Mirador Complex.** GHF funding will preserve the oldest and largest pyramid in the Maya world - La Danta - along with the site of El Mirador to become the engine for sustainable tourism and economic development in Northern Peten, Guatemala. We expect to complete La Danta within two years along with 10-12 other major buildings at El Mirador. GHF funding will complete the conservation of La Danta, the North Acropolis, Structure 34, and the La Muerta and Cascabel complexes.

### **Mirador Park Rangers - Equipment and Training: \$60,000 over 2 years**

GHF is supporting the equipping and training of over 90 Mirador Park Rangers to work in forestry and wildlife conservation, visitor management and law enforcement. GHF funding covers travel expenses only, while the U.S. Department of Interior covers all personnel salaries and benefits.

### **Mapping, GIS Surveys and Publishing: \$40,000 over 2 years**

GHF is supporting the comprehensive mapping of Mirador's 26 major cities and hundreds of pyramids, temples and causeways, including eight cities which are larger than Tikal. The government of Guatemala is now incorporating GHF's GIS and Mapping into national maps and conservation plans for the Maya Biosphere. Mapping of archaeological sites is particularly important as the Guatemalan constitution establishes a three-kilometer buffer zone around any archaeological site to protect against logging, looting and poaching.

### **Community Development - Guide / Operator Training: \$60,000 over 2 years**

Since completion of the new Carmelita Visitor Center and Water System in 2005, GHF is investing in community-based tourism development, guide training and park infrastructure for the communities around Mirador to manage the Guide Association (over 240 members), eco-lodges, tour operators, restaurants and other services. GHF investments in 2012-13 will be in the form of small grants and micro-loans.

### **GHF Project Leadership: \$40,000 over 2 years**

Protection and conservation of Mirador will only be possible long term with the full support of the government and the communities and people of Guatemala, the core focus of GHF's efforts.

**\$480,000 Total Conservation Budget - 2012-13**

## GHF Mirador Conservation



**Above:** The intact native tropical forests of Mirador shroud the spectacular La Danta pyramid, thought to be the largest in the world by volume. GHF funding enabled La Danta to be conserved and opened to the public in 2010.

### Conservation Objectives

GHF's primary conservation goals for Mirador are:

1. Establish permanent protection for the nature, wildlife and archaeological heritage
2. Assist the Guatemalan government in securing UNESCO World Heritage designation
3. Secure an economically sustainable protected area within the next 5 years

GHF's primary goal is to establish Mirador as a road-less preserve with carefully managed tourist accessibility, community participation and harvesting of renewable resources (xate, chicle, pimienta) by community organizations. Protecting Mirador will not only preserve Guatemala's natural and cultural heritage but also contribute to its economic future.

The major threats to Mirador are rooted in the poverty of the people in the surrounding communities and compounded by the largely unchecked illegal logging, conversion of forests to large-scale cattle ranches, and trafficking in drugs, wildlife and humans. The lack of opportunities has led to slash-and-burn agriculture, poaching, looting and other destructive activities. The welfare of the Basin and its inhabitants can be best addressed by establishing and enforcing it as an archaeological and wildlife preserve with controlled tourism.

If properly done, the economic benefits of sustainable tourism will outweigh the current returns from logging, poaching or slash-and-burn agriculture. As such, tourism and its secondary benefits should be considered a major economic activity that complements other legal and appropriately managed activities within this area (e.g. sustainable harvesting).

Just 70 miles from Mirador is Tikal National Park, and although its visitor services/education and the maintenance of its archeological wonders are in need of improvement, Tikal as a national park has proven its effectiveness for natural resource protection, not having lost one acre of forest in 30 years to fires, logging or clearing. Furthermore, with less than half of the acreage of Mirador and with many fewer monuments, Tikal National Park generates over \$200 million in annual tourism revenues. In comparison, logging concessions in the area presently generate less than \$2 million a year.

GHF Mirador Conservation

**Success Factors - Conservation and Park Development: Comparison of Mirador and Tikal National Park**

	Mirador	Tikal National Park
<b>National Park Status</b>	Mirador-Rio Azul National Park Designated (120,000 acres only) Mirador Cultural and Natural Preserve (528,000 acres)	142,080 acres National Park Status
<b>UNESCO World Heritage</b>	Guatemalan Nomination pending	Designated in 1979
<b>Number of Visitors</b>	3,200 (2009)	128,000 (2008)
<b>Lodging Available (Number of Rooms)</b>	0	160
<b>Primary Transportation</b>	Hiking, Mules, Helicopter, Mirador Rail (Possible Future)	Buses and Private Cars
<b>Camping Sites</b>	20	1
<b>Trained Nature and Archaeology Guides</b>	8 English-Speaking Guides/ 60 Visitor Escorts	120 Foreign Language Speaking Guides/ Tikal Guide Association
<b>Visitor Center and Museum</b>	Community Visitor Center in Carmelita under construction; Museum Planned	Tikal Museum, Monument Museum and Visitor Center
<b>Master Plan</b>	Assist with Updating of Mirador-Rio Azul NP Management Plan	First Plan in 1990 / Revised in 2004
<b>Major Monument Conservation</b>	8 Major Structures since 2003	22 Major Structures since 1970
<b>Conservation Philosophy</b>	Wilderness Strategy- Minimal Clearing, Facades Only	Complete and Partial Clearing of Vegetation and Forest on Structures
<b>Sustainable Forestry and Harvesting of renewable resources (xate, pimienta, chicle)</b>	Yes	No - Illegal

## GHF Mirador Conservation



**Left:** Central Plaza of Tikal. **Right:** Mirador's Tigre pyramid to scale over the Central Plaza of Tikal.

### The Next Five Years - Saving Mirador

Based on the new Mirador Master Plan, the Guatemalan government, local residents and the international community are all supporting the protection of Mirador, creating a rare opportunity to save this exceptional place. However, immediate action and effective management are necessary in order to ensure success. With your support, we can ensure that the treasures of Mirador are preserved for future generations of Guatemalans and the world.

Our immediate goal is the preservation of the entire complex of El Mirador - Guatemala's 'next Tikal' - within the next two years. This work, led by Dr. Richard Hansen and over 120 Guatemalan and international professionals and workers, includes excavation, research, conservation and consolidation of the world's largest pyramid, La Danta, as well as 10-12 other major monuments and numerous smaller temples and housing complexes.

El Mirador will have facilities, interpretation and visitor services similar to or better than Tikal National Park. Our goal within 10 years is to have 10-20,000 annual visitors generating the \$2-3 million budget needed for 120-160 park rangers and staff for law enforcement, forestry and park management.

Together with our partners in Guatemala and the United States, GHF has made excellent progress over the past year to build a strong base of private- and public sector support for the large-scale conservation and planned development of the Mirador Cultural and Natural Preserve.

## GHF Mirador Conservation



Above: New maps have been developed for the guide associations and visitors.

### Site Planning and Preservation

**Mirador Master Plan.** The GHF-sponsored Master Conservation Plan for Mirador was formally presented to President Alvaro Colom of Guatemala in 2011 by PACUNAM, the Ministry of Culture and the National Council of Protected Areas. The drafting process over two years incorporates input from the government ministries, local communities, stakeholders and the U.S. Department of Interior. The Mirador Master Plan provides a clear vision and program for the sustainable conservation and development of Mirador over the next decade.

**UNESCO World Heritage Nomination.** Mirador has become Guatemala's top candidate for UNESCO World Heritage inscription. With support from GHF, a new office of World Heritage has been established in the government of Guatemala, a first for the country. We expect a formal nomination by the government of Guatemala in the next 2-3 years, the country's first new nomination since the 1970s.

**New Growth in Mirador Tourism.** Annual visitation is projected to grow from 3,600 to 10,000 in the next five years and to 10-20,000 visitors annually within 10 years, generating over \$20 million total in revenues for the park and the local communities. With improved access on bikes, horses, hiking trails and plans for a small narrow-gauge train, Mirador will be the most important new tourism destination in Central America.

**Training and Education of Mirador Communities.** GHF has equipped and trained 60 guides in the community association and funded Mirador's 30 park rangers who have been instrumental to stop the burning, looting, poaching and illegal logging in the Mirador Basin.

## GHF Mirador Conservation



Above: GHF-sponsored conservation and training employs over 220 Guatemalans and 30 international professionals and workers each year, providing meaningful employment and an alternative to logging, poaching, looting and illegal trafficking.

### Community Development

GHF is working with our partners and the local communities to provide new educational and economic alternatives to the negative forces that wreak havoc on the environment, the archaeological sites and individual lives and families in and around Mirador.

It is tremendously gratifying to see the achievements and accomplishments of people who traditionally have had so little hope. The opportunities provided by the Mirador Project are a major advantage for the protection and preservation of the area, and are a real solution to many of the problems facing Guatemala and the communities living adjacent to Mirador.

**Employment.** The project contributes directly and indirectly to the communities adjacent to the basin by contracting more than 320 workers. Labor recruitment also extended to other parts of the Peten. More than 35 workers were highly trained Maya masons and consolidation experts from Coban, Alta Verapaz. Additional services were contracted during field season for muleteers, cooks, guides and kitchen assistant. The scientific/technical team included more than 40 people. To accommodate this work force, FARES established three camps: El Mirador, Tintal and one roving camp during the regional surveys in the Mirador Basin.

**Basic Education.** The Mirador Basin Project provides a trained computer teacher for the communities of Carmelita, Cruce a la Colorada and Dos Aguadas, with classes taught in Carmelita to 54 children from 2nd through 6th grades.

**Literacy Training.** The Mirador Project provides literacy courses to 141 workmen, with the majority learning to read and write their names, read elementary texts, and to read and write numbers. Math courses are also given for basic home and business financial calculations. In addition, the Project provides educational classes in the evening to all 320 workmen employed in the Mirador Basin on subjects ranging from history, ecology, financial consulting, hygiene, health and first aid, archaeology, photography, ethnohistory, investment strategies, botany, and biology.

Literacy classes for project workmen have been an integral component of the project since 1991. In 2006, the National Council of Literacy (CONALFA) program was implemented at El Mirador, enabling teachers to work with students according to their individual educational needs. Out of 220 workers, 160 workers chose to participate in the evening sessions. Diplomas were presented on site to those that completed the course.

## GHF Mirador Conservation



**Left:** Carmelita's newly opened visitor's center will serve as the hub for park management, visitor education and guide services in Mirador. **Right:** GHF, APANAC (Asociación de Amigos del Patrimonio Natural y Cultural), FARES and community leaders dedicate a new water system in Carmelita.

**Computer Training.** 45 computers are operational with custom-designed courses for students and adults on conservation, nature, wildlife, archaeology, history, guiding and park ranger training.

**Community Visitor Center.** Over 60 certified guides now lead over 3,500 visitors a year into Mirador. GHF and our partner APANAC established the first Community Visitor Center and organized the Carmelita Guide Association.

**Water Systems.** Fundamental to life is water. GHF and APANAC opened the first water system in Carmelita critical to visitors and the locals for Mirador to be successful.

**Eco-Filters for Water Purification.** The Mirador Project and Eco-Filters de Guatemala joined together in distributing 185 filters to the communities of Carmelita, Uaxutun and Cruce de las Dos Aguadas. Another 35 filters were dedicated to the Mirador Basin park guard stations, which included important training on and use of the filter system to improve the health situations in the communities.

## GHF Mirador Conservation



**Above:** Repairs and consolidation of La Danta pyramid of El Mirador, thought to be the world's largest by volume. **Below:** After GHF-funded consolidation, La Danta is now open to the public.



## GHF Mirador Conservation



Above: Evidence of poaching in the communities surrounding Mirador.

### Nature and Wildlife Conservation

GHF's goal is to eliminate poaching and natural resource excavation in protected areas by building a highly effective Mirador Park Service comprised of a core team of trained professionals from Tikal National Park and supplemented with new hires from the local communities of Carmelita and Uaxactun. The Mirador Team is not only enforcing existing laws against poaching but also will be implementing a more comprehensive wildlife conservation program, including:

1. Conducting population status and distribution surveys
2. Monitoring population health and genetics
3. Establishing long-term ecological studies of jaguars in various habitats
4. Managing jaguar-livestock conflict and conducting rancher outreach and education
5. Training and educating community members

### U.S Department of the Interior (DOI) Partnership

The Department of the Interior is the U.S. government agency with primary responsibility for the management of natural and cultural resources in public trust, including the U.S. national parks and wildlife refuges; the U.S. Department of the Interior International Technical Assistance Program (DOI-ITAP) works toward the conservation of natural and cultural resources worldwide through the provision of technical training and consultation.

The unique strengths that DOI-ITAP offers include:

- World-class leadership in the management of protected areas for natural and cultural resources.
- Technical expertise in a wide array of natural and cultural resource disciplines with a depth of applied technical knowledge and international experience.
- Development of direct government counterparts within host-country natural resource management agencies and establishment of government-to-government relationships.
- Cost effective technical assistance: All salaries for short-term DOI technical assistance are donated by DOI.

## GHF Mirador Conservation

While ensuring that surrounding communities derive economic benefits from the park, DOI will direct its initial assistance to:

- park planning
- visitor education and orientation
- resource and visitor protection
- park user fees and concessionaires for visitor services
- park partnership management

Without proper law enforcement and monitoring, the Maya Biosphere and its protected areas are just “Paper Parks” without the human staff and support to ensure species survival, environmental health and archaeological conservation. Even Mirador is already becoming an ‘Empty Forest’ with massive poaching of jaguar and other wildlife by surrounding communities.

### **Long-term Financial Support and IDB Funding**

Mirador will be the primary beneficiary of future planned Inter-American Development Bank (IDB) and World Bank funding in the Maya Biosphere of over \$28 million in loans to the Guatemalan government. While these long-term government loans bode well for the project, it is critical that international planning and scientific conservation from GHF and our partners be involved in the first five years of the project’s development.

GHF’s early and direct private-sector support for planning, scientific conservation and responsible development provides the needed long-term vision and careful planning to guide Mirador’s development and to ensure the highest quality implementation within a sustainable model.

## GHF Mirador Conservation



**Above:** Mirador Rail conceptual route and travel perspectives. The Mirador Rail Feasibility Study was supported by the Thornton Foundation to provide a model for responsible, low-volume and low-impact tourism into Mirador.

### Preparing for Tourism

The Mirador Project is expected to attract over 10,000 visitors annually by 2020, generating an estimated \$1.5-2 million annually to benefit directly the surrounding communities (assuming visitor expenditures of \$150-200 per day averaging five-day trip including air, lodging, food and travel). This influx will offer new private enterprise opportunities other than logging and slash-and-burn agriculture, including guiding, providing transport, selling handicrafts and textiles, and operating food and lodging establishments.

Tourism can provide an important new potential source of income for local communities when they are educated and trained to meet tourist needs and are equipped with adequate infrastructure and services.

GHF is dedicated to ensuring that Mirador tourism is responsible and sustainable, and that local communities benefit directly. As part of this initiative, the Guatemalan government has agreed to improve the road to the villages surrounding Mirador, provide increased security measures for tourists, and supply electricity for rural villages surrounding the basin for the first time, making the village of Carmelita (the primary village in close proximity to the basin) a “model community.”

To ensure that this area remains a road-less wilderness sanctuary, GHF is conducting a feasibility study for a narrow-gauge, propane-driven rail system (see above) that will transport visitors into this area and between major archeological sites. Not only will the rail restrict noise and pollution, it will also allow the Basin’s management to strictly control visitor flow, leaving key areas undisturbed as wildlife habitat. Opportunities for the rewarding hike on foot or on horseback into the site and between sites within this area will continue to be available, offering the same visitor experience that is available today.

**GHF Mirador Conservation**

**GHF Mirador Conservation Budget: 2012-13**

	<b>2012</b>	<b>2013</b>	<b>Total</b>
<b>Nature and Wildlife Conservation</b> Forestry/Biological/Flora Inventory Wildlife/Fauna Inventory Jaguar Tracking and Monitoring	\$30,000	\$30,000	\$60,000
<b>Archaeological Conservation and Restoration</b> La Danta Conservation Tigre Conservation Nakbe Conservation Structure 34 Science and Consolidation	\$120,000	\$100,000	\$220,000
<b>Park Rangers and Law Enforcement</b> Community Ranger Training Equipment Ranger Salary Subsidies	\$30,000	\$30,000	\$60,000
<b>Community Development</b> Guide Training Water Systems Tourism Infrastructure	\$30,000	\$30,000	\$60,000
<b>Master Planning and Mapping</b> GIS and Mapping Total Station Mapping 3D Monument Surveys Master Plan Drafts Stakeholder Meetings	\$20,000	\$20,000	\$40,000
<b>GHF Project Leadership</b>	\$20,000	\$20,000	\$40,000
<b>TOTAL PROJECT EXPENSES</b>	<b>\$250,000</b>	<b>\$230,000</b>	<b>\$480,000</b>

## Conclusion

Mirador is an irreplaceable cultural and biological jewel that deserves permanent protection. It is home to the largest and earliest cities in the Maya world and is the last tract of virgin forest remaining in Central America, supporting dozens of endemic and endangered species.

Global Heritage Fund needs your support to fund the critical work in Mirador. Your support will ensure long-term protection of the area's outstanding cultural monuments, over 550,000 to 880,000 acres of pristine rainforest and an exceptional array of species. In addition, you will help provide sustainable economic development in the Peten region, providing long-term employment for local residents and an alternative to environmentally destructive practices.

We have a narrow window of opportunity to save this incredible place for future generations, and we very much hope you will join us in this endeavor.

## Acknowledgements

GHF Mirador was supported in 2010 and 2011 and previously by over 40 foundations, corporations and families, securing over \$4 million in total cumulative funding and \$3 million in in-country co-funding. GHF wishes to acknowledge the following supporters:

Swift Family Foundation  
Walton Family Foundation  
Foundation for Free Expression  
Thornton Foundation  
Richard and Rhoda Goldman Fund  
Townshend Family Foundation  
Morgan Family Foundation  
Franklin and Catherine Johnson Foundation  
Gilman Ordway Foundation

and many other generous foundations and individual donors.

GHF is especially thankful to PACUNAM, a Guatemalan group of families and industry leaders who have committed to match GHF funding for Mirador conservation up to \$3 million, and GHF Trustees for Global Heritage who provide the critical funding for GHF field operations and project leadership.

## GHF Mirador Conservation



Above: Dr. Richard Hansen (center), GHF Mirador Project Director, accepts the President's Medal of Honor, the first time a non-Guatemalan has received the honor for saving the cultural and natural patrimony of the country.

### GHF Leader in Conservation: Dr. Richard Hansen, Mirador Project Director

Richard Hansen is an eminent archaeologist and the founder and president of Foundation for Anthropological Research and Environmental Studies (FARES). He has published over 100 scientific papers and popular articles and has presented more than 200 professional papers and technical reports in scientific conferences throughout the world. He has conducted and directed archaeological research across the world in Israel, the U.S. Great Basin, the U.S. Southwest and Central America.

Currently Senior Scientist at the Institute for Mesoamerican Research in the Department of Anthropology at Idaho State University, Dr. Hansen is a specialist on the ancient Maya and also a director of the Mirador Basin Project, which investigates the mainly unexplored territory in Petén, northern Guatemala. Most of his achievements have been gained in the Mesoamerican region and early Maya civilization. In 1989, discoveries by Hansen and his colleagues suggested that the ancient Maya had centralized governments far earlier than once supposed, building massive centers as early as 1000-800 B.C.

His work has recently been featured in 17 film documentaries, including on the Learning Channel, the Discovery Channel, ABC's 20/20, 60 Minutes Australia, ABC's Good Morning America, ABC's Primetime Live, CNN International Untold Stories, CNN Global Challenges, The History Channel, British Broadcasting Corporation (BBC), Guatevisión, and National Geographic. He has been a consultant for many national and international television networks and major motion picture companies.

GHF Partners in Conservation



Foundation for Anthropological Research and Environmental Studies (FARES)

FARES is a non-profit 501(c)(3), scientific research institution and public charity formed in January 1996. Its primary function is to conduct scientific research on ancient and contemporary societies and associated environments, and utilize this research for development, conservation and education. FARES is currently working in close collaboration with the government of Guatemala and numerous prestigious foundations and institutions throughout the world. The organization employs a comprehensive developmental approach to form a strong, multi-disciplinary and systematic approach to understanding human behavior and cultural relationships with the environment from both ancient and contemporary perspectives.



PACUNAM

The Foundation of Cultural and Natural Maya Patrimony (PACUNAM) looks to become Guatemala’s leading foundation in the preservation of Mayan natural and cultural heritage by combining the efforts of companies, businessmen and individuals. With long-range planning, its mission includes education, recovery, maintenance, protection and advertising of Mayan natural and cultural heritage by promoting responsible, sustainable and profitable tourism.

The Foundation’s values are: To fulfill its vision and mission, to promote multi-sectorial cooperation, publication of information and of acquired knowledge and archaeological and ecological investigations. Its primary objective is to support the Cuenca Mirador Project in order to attract sustainable tourism that benefits Guatemalans’ wellbeing in general and of Peten people in particular.



## Global Heritage Fund

### **About Global Heritage Fund**

Global Heritage Fund is an international heritage conservancy established to protect, preserve and sustain the most significant and endangered cultural heritage sites in the developing world.

GHF works together with local communities and in-country partners to save their cultural heritage treasures and multiply their economic, educational and environmental benefits for future generations.

GHF's Multiplier Effect is made possible by working closely with local communities and a global network of experts to provide catalytic funding using our 360-degree *Preservation by Design*® methodology - incorporating planning, science, community and partnerships - to protect and preserve endangered heritage sites and maximize income, employment and investment in communities and regions around GHF Projects.

Since 2002, GHF has six completed and 12 in-progress projects at global heritage sites which have generated over \$100 million in new economic investment and income in developing regions to alleviate poverty.

### **Contact Information**

For more information on GHF's conservation work in the Mirador Basin or other GHF Projects to save the most significant and endangered cultural heritage sites in developing countries, see GHF Projects under What We Do at:

[www.globalheritagefund.org](http://www.globalheritagefund.org)

To support our work, send tax-free donations payable to Global Heritage Fund (Tax ID# 20-5009512) at:

**Global Heritage Fund**  
625 Emerson Street Suite 200  
Palo Alto, California 94301 USA  
Tel: (650) 325-7520  
Fax: (650) 325-7511  
[info@globalheritagefund.org](mailto:info@globalheritagefund.org)