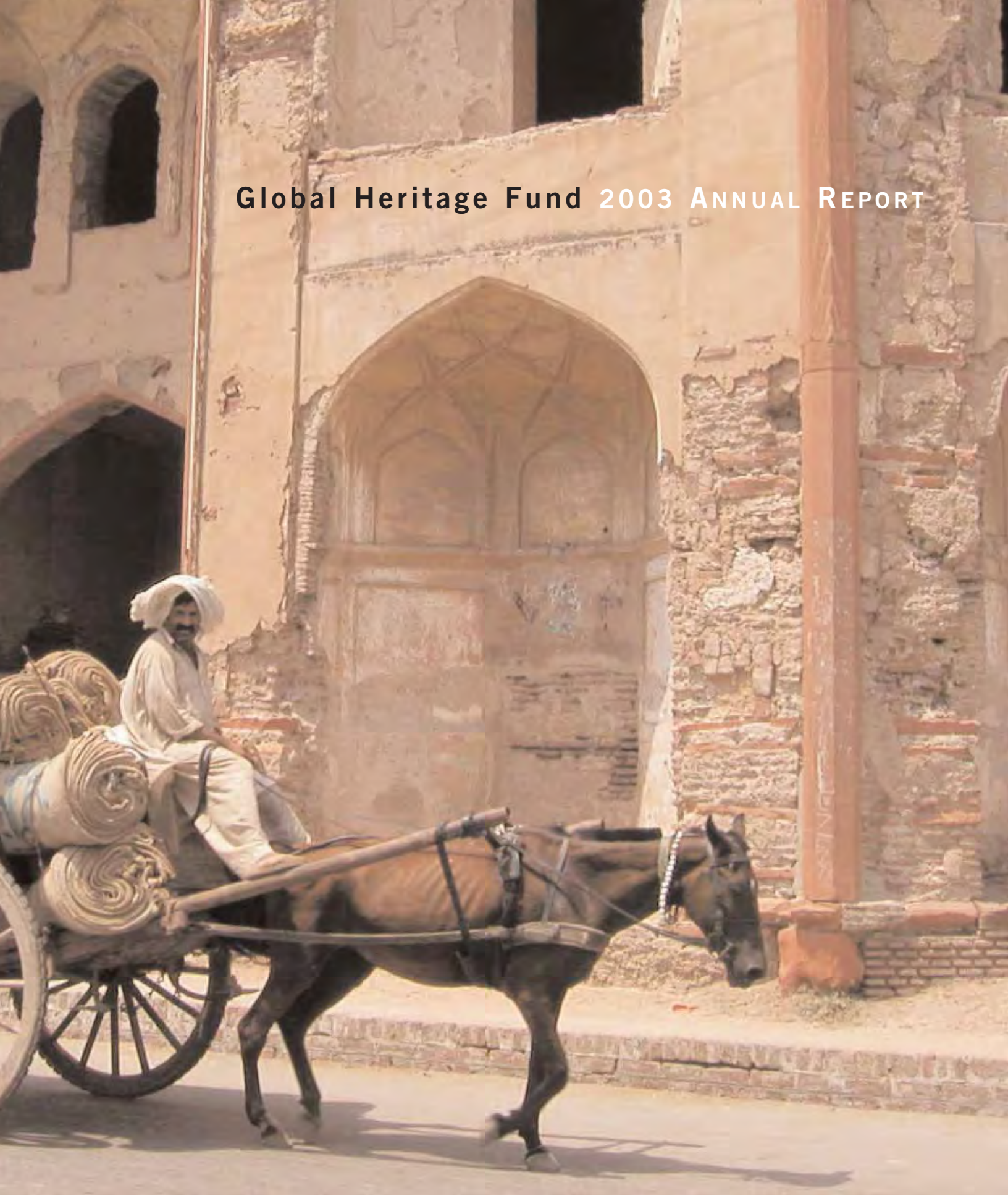


Global Heritage Fund 2003 ANNUAL REPORT



Global Heritage Fund



With Your Support

We can reverse the devastation and save humankind's last remaining *Cradles of Civilizations*. There are less than 100 world-class archaeological sites left in developing countries.

We are losing more each year.



GHF Mission

Global Heritage Fund's mission is to enable successful long-term preservation of humankind's most important archaeological sites and ancient townscapes, creating new engines for economic growth in developing countries. GHF develops comprehensive Master Conservation Plans, provides early matching grants and training, builds local institutions and promotes sustainable tourism development to ensure permanent protection for global cultural treasures. Global Heritage Fund is a registered non-profit international conservancy based in Palo Alto, California.

Global Heritage Fund is a registered 501(c) tax-exempt non-profit organization.

Contents

- 4 Letter from the Executive Director
- 6 Our Vanishing Heritage
- 12 Preservation by Design
- 16 Saving Our Global Heritage
Where We Work
- 20 2003 Milestones
Mirador Basin, Guatemala
Chavín de Huátar, Peru
Lijiang Ancient Town, China
- 28 GHF Advocacy and Outreach
- 30 Acknowledgements
- 30 How You Can Help
- 31 Ways to Give
- 32 Contact GHF

Wat Phou, Laos

Letter from the Executive Director

IT IS WITH GREAT PLEASURE THAT WE PRESENT OUR second formal annual report to our partners, supporters and Board of Trustees and Advisors. We hope you will join us in saving the last remaining imperiled world heritage sites in developing countries- such as Mirador Basin in Guatemala and Chavín de Huántar in Peru- each representing humankind's *Cradles of Civilization*.

Today, there are fewer than one hundred UNESCO World Heritage class sites that have survived in the developing world. The devastation over the past twenty years has been unprecedented. **Our critical mission is to save priceless endangered world heritage sites in developing countries.** Today, GHF is implementing our innovative Preservation by Design methodology at eight **GHF Epicenters**, and creating an unprecedented opportunity for long-term sustainable conservation and economic development.

GHF believes that the destruction and neglect of our irreplaceable world heritage sites represents a theft from future generations. With our proven approach of Planning - Science - Conservation Trusts - Advocacy, successful conservation practice over generations is possible for many of these sites.

GHF acts as a catalyst for change, combining international funding and expertise with local in-country matching funds to multiply available resources for conservation. Through our innovative **GHF Conservation Trusts** established for each GHF Epicenter, long-term solutions are explored and implemented by a team of local and international conservation leaders.

GHF believes it is the duty of both governments and citizens of wealthier nations to pro-

vide technical and financial support to less wealthy nations to protect our common heritage. More importantly, we have the responsibility to implement incorruptible, efficient, and cost-effective mechanisms which increase involvement from all stakeholders. Our work over the past two years making GHF Conservation Trusts economical and accountable has been a resounding success in the most difficult environments.

2003 was a challenging year with the economic downturn impacting our fundraising ability. Despite this, GHF raised over \$860,000 in grants for six GHF Epicenters and a \$1 million Challenge Grant for GHF's work in Mirador Basin, where the Richard and Rhoda Goldman Fund contributed \$315,000 towards establishing its first park service. We are encouraged by our successes in 2003:

In the Americas, GHF completed conservation and restoration at El Mirador, Cascabel and La Muerta sites in Guatemala, setting a new model for all future conservation of the Pre-Classic Maya pyramids, temples and settlements in Mirador Basin. GHF helped secure Special Protected Area designation for 525,000 acres, the first step in establishing the new Mirador Basin National Monument, which is now Guatemala's #1 UNESCO World Heritage nomination. GHF support and training for park rangers and guards has reduced looting by over 90% in the Mirador Basin and eliminated jaguar traps and illegal logging.

At Chavín de Huántar in Peru, GHF undertook emergency conservation for a newly discovered ancient city found last year during the construction of a new road. GHF mobilized an international team for excavation, protection and conservation of this amazing site. GHF

trained twelve (12) local Chavinese in archaeological conservation and provided funding of salaries for work in emergency conservation and artifact conservation.

For Lijiang Ancient Town UNESCO World Heritage site in Yunnan, China, GHF's innovative government-community partnership has restored over forty (40) of the 200 most endangered ancient residential buildings in the Core Protected Area. All work is based on Lijiang's first ever Master Conservation Plan co-developed by GHF and Shanghai Tongji University to provide a blueprint for conservation work. The Plan has been approved and is now being implemented by the Chinese government.

In Lahore, Pakistan, GHF established the country's first Conservation Trust which enables local in-country donors to receive tax-deductions for contributions to GHF's restoration of the Asif Khan Tomb located in the Jahangir Complex. As well, GHF expects the Pakistani government to equally match GHF-led funding and provide long-term resources for ongoing upkeep requirements.

Our fascinating series of GHF Events in the Saving Our Global Heritage campaign has raised awareness and critically needed funding in the United States. GHF created a dialogue between GHF Leaders in Conservation and leading foundations, individual and family philanthropists and other conservation groups. Increased media coverage, including features in Outside Magazine, the San Francisco Chronicle, and the Far Eastern Economic Review, has helped to bring our endangered world heritage to the forefront of government policy and public awareness. Three professionally-produced GHF videos were created to

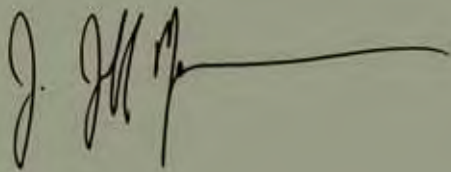
raise awareness and new funding for world heritage conservation in developing countries.

We are also delighted to introduce new board members, and welcome the depth of knowledge and business acumen they bring to the organization.

Looking to the future, GHF is working to expand the number of endangered world heritage sites where we work and ensure each receives world-class planning, science, conservation, advocacy and long-term support.

We need your support to build a constituency that can make a real difference. **Our goal for the next ten years is to save forty (40) of the less than one hundred (100) remaining endangered world heritage sites in developing countries.** This will require raising more than \$10 million in GHF funding, establishing a GHF Epicenter Trust for each site, and then leveraging this investment with government and international banks and agencies to create in excess of \$40 million in total resources focused on endangered world heritage conservation.

Global Heritage Fund believes the time for effective direct action and making concrete progress to save our last remaining imperiled world heritage is now- before it is too late.



Jeff Morgan | Executive Director



Our Vanishing Heritage

Our cultural heritage of ancient towns, cultural landscapes and archaeological monuments is vanishing rapidly.

Threatened by neglect, urban encroachment, looting and vandalism, these sites are being obliterated by seemingly unstoppable forces of urbanization and greed. The accelerating black market trade in ancient cultural artifacts is causing irreversible damage. Manmade and natural disasters, such as the appalling Taliban destruction of Afghanistan's monumental Bamiyan Buddhas and the earthquake that recently

destroyed Iran's historic city of Bam, require constant vigilance.

Few countries in the developing world have the resources necessary to provide professional conservation, planning and park services for world-class Global Heritage sites. Many of these nations still contend with the demands of day-to-day survival. Furthermore, national leaders may have little understanding of the tourism and economic potential of Global Heritage sites.

Without funding, expertise and infrastructure to adequately protect and preserve these cultural treasures, the remains of ancient civilizations, townscapes and monuments will be lost forever.

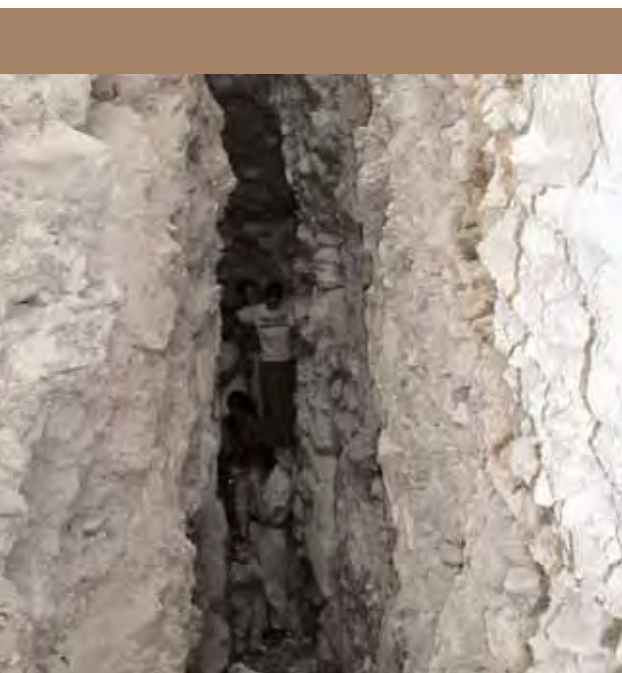


Asif Khan Tomb, Pakistan

Neglect

Asif Khan Tomb, Pakistan

In Pakistan there are few resources available for protecting and conserving its wealth of world heritage sites. The Asif Khan Tomb at Jahangir Complex is one of Pakistan's most important monuments, yet has seen no support for conservation for over 200 years. GHF is reversing this trend providing needed planning, conservation and advocacy for the Asif Khan Tomb, with restoration beginning in 2004 for the entire complex.



Looting

Mirador Basin, Guatemala

Armies of organized looters in Guatemala systematically destroy archaeological sites in search of a few intact pots from ancient tombs and temples. The site of Tintal, the fourth largest Maya site in the world, was entirely destroyed in the early 1990s by an army of workers digging over 1,200 looter trenches throughout the site. Each trench measured six-feet deep and was approximately 50 to 100 yards long. GHF funding for park guards at

Mirador has stopped all looting within the 525,000 acre Protected Area, which was estimated to cost Guatemala more than \$10 million a year in loss of cultural heritage artifacts, not including the destruction of the archaeological sites and their potential for future tourism.

Looter Trenches, Mirador Basin, Guatemala



Warfare

My Son Sanctuary, Vietnam

Ground fighting and aerial bombardment destroy many world heritage sites. The UNESCO World Heritage site of My Son Sanctuary in Vietnam was the target of a one week bombing campaign during the Vietnam War which destroyed fifty of the 75 remaining monuments of the 2000-year-old Champa Kingdom, the only major archaeological site in Vietnam- a tragic, irreparable loss.

Encroachment

Lijiang Ancient Town, China

Recent unregulated new construction within the Protected Area has severely degraded Lijiang's authentic urban fabric- the last remaining living ancient town in China. GHF has reversed this trend leading to demolition of many 'new' buildings within the Core Protected Area and establishing strict building regulations on all future development to ensure authenticity and harmony with the ancient town.



*Removal of modern building
Lijiang Ancient Town, China*

Global Heritage Fund (GHF) was founded to address this critical need in conservation. The most effective way to build support and enforce protection is to demonstrate success - by establishing permanent legal protection and enforcement, through scientific planning and conservation, and by creating economic benefits at the community level.

In a cooperative process, we partner with local institutions to create a conservation planning network. Our network of experts contributes the necessary scientific knowledge and technology, while our system of matching endowment grants encourages foundational support from both government and international donors.

Through a symbiotic process of training, education, and advocacy, we encourage communities to create change internally.

Our long-term goal is to catalyze sustainable conservation through managed economic growth.



*Damaged from shrapnel
Iraq World Heritage Site*

Lack of Security

Iraq

The political instability of many developing countries has allowed unchecked pillaging and looting of archaeological sites driven by the illegal trade in cultural antiquities. In Iraq, wholesale removal of sculpture and artifacts, many hacked off monuments by chainsaws, is continuing even after the recent U.S. occupation.





*GHF sponsored conservation technology includes roofing to protect Preclassic Maya monuments.
Mirador Basin, Guatemala*

Preservation by Design

Global Heritage Fund monitors the status of conservation of more than one hundred Global Heritage sites in developing countries. Twice each year, the GHF Advisory Board uses a rigorous nomination and selection process to select the most critically endangered **GHF Epicenters** where our expertise, funding, technology and training will have the most beneficial impact.

GHF Epicenters are engaged in a multi-year accelerated conservation program based on GHF's Preservation by Design methodology encompassing:

- Master Conservation Planning
- Conservation Science and Training
- High-Priority Monument Conservation
- Advocacy and Tourism Development

Global Heritage Fund works with our GHF Epicenters to

develop a unique Master Conservation Plan that outlines objectives, threats, opportunities, provides a historical-architectural survey and working preservation plan—both for the archaeological site and the greater region.

Global Heritage Fund's approach takes each GHF Epicenter through the planning and implementation process using the power of our Global Heritage Network (GHN) to supply critically needed science, technology, and expertise.

GHF's collective effort shares responsibility for the preservation of world heritage. Preservation by Design integrates planning, conservation, training, research, museum interpretation, effective fiscal management, and quality assessment into a cycle of conservation success.

▶ Master Conservation Planning

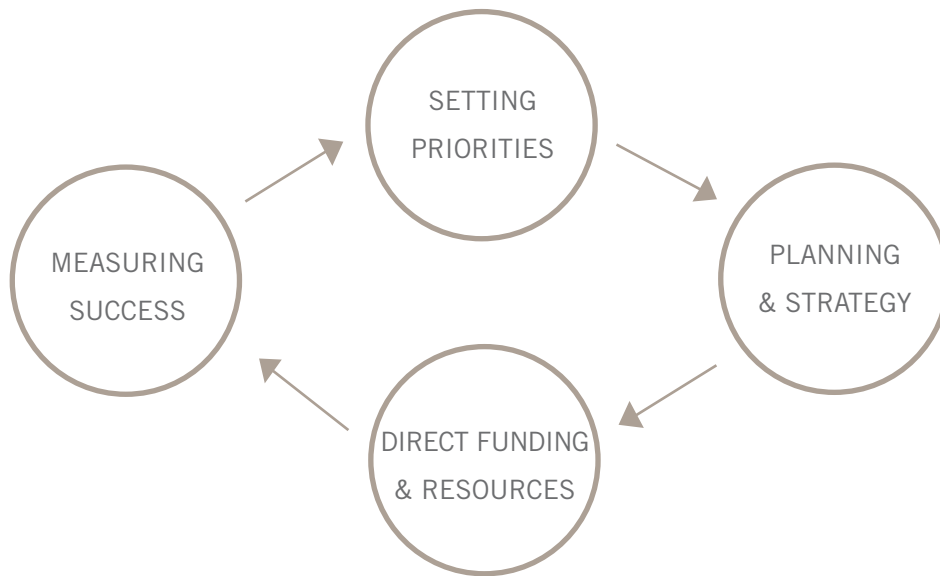


Preservation by Design in Lijiang Ancient Town, China

▶ Conservation Science and Training



Cycle of Success



▶ High-Priority Monument Preservation



▶ Advocacy and Tourism Development







Konarak Sun Temple, India

Saving Our Global Heritage

Where We Work



MIRADOR BASIN Guatemala



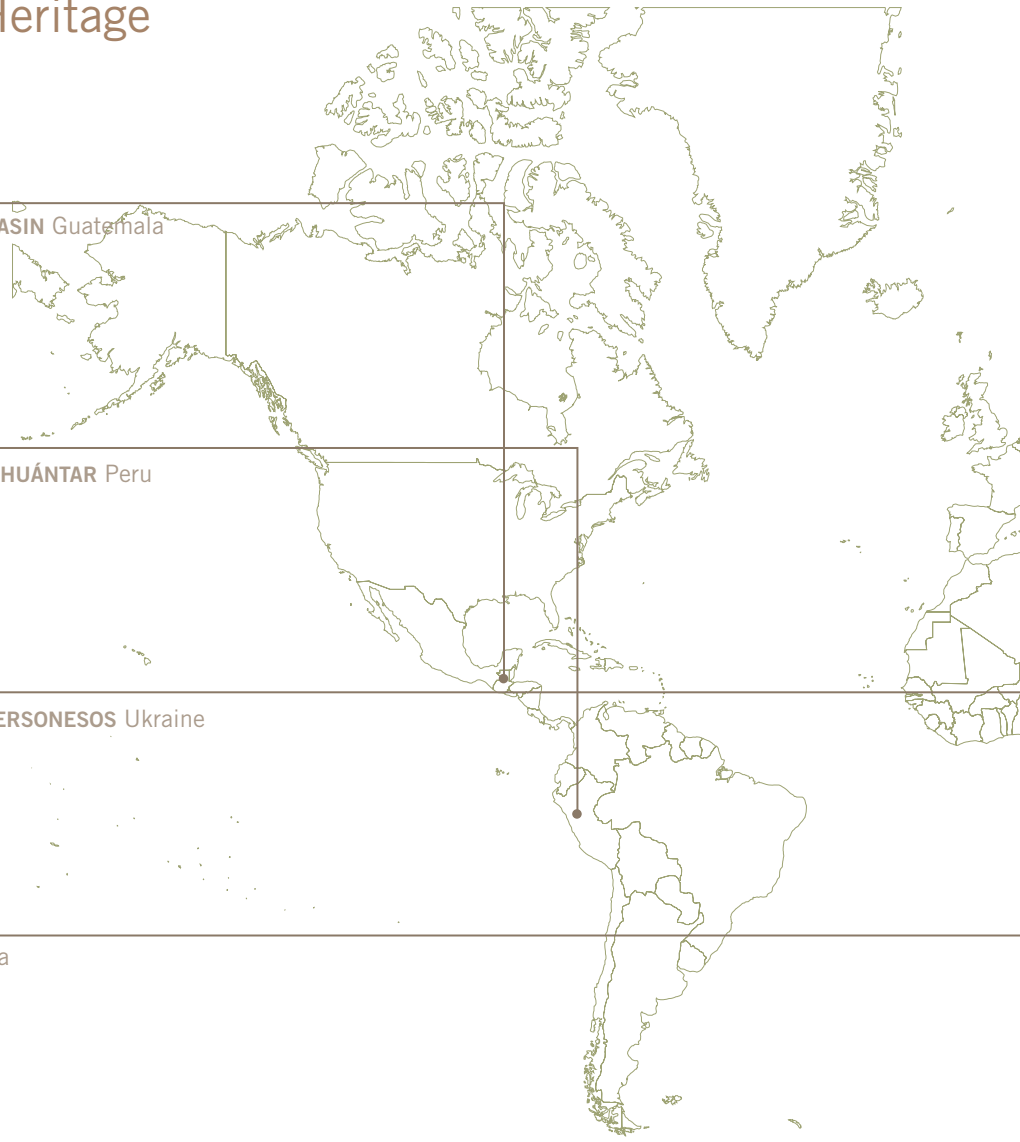
CHAVÍN DE HUÁNTAR Peru



TAURIC CHERSONESOS Ukraine



GEDE Kenya



Global Heritage Fund has been an indispensable partner and gave critical support at an early stage in establishing Mirador Basin, before other institutions were willing to take the risk and provide needed funding and expertise.

DR. RICHARD HANSEN, DIRECTOR
Mirador Basin Project



Mirador Basin, Guatemala



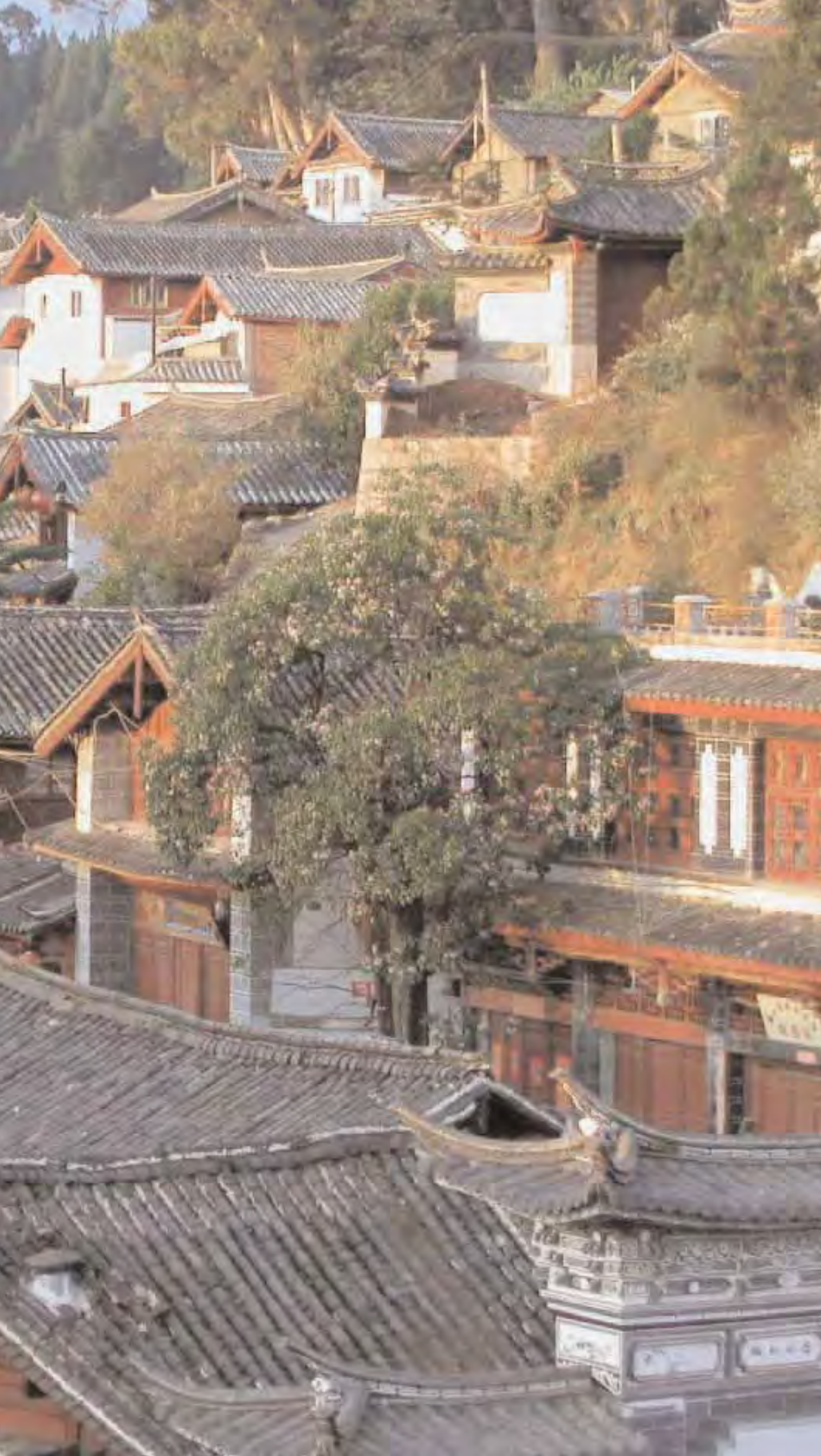
"Based on the \$10,000 I granted with my company - InterActive Corp as a matching donor, GHF has raised hundreds of thousands of dollars in Peru from local companies and funded a 4 year conservation program to restore and protect Chavin de Huantar. Both on the mission to Peru and as a donor, I feel like I have made an impact which will be a legacy for years to come."

MARJ CHARLIER
Director of Community Affairs,
Expedia and InterActive Corp.



Chavín de Huántar, Peru





Lijiang Ancient Town, China

2003 Milestones

Saving Our Global Heritage

Mirador Basin National Monument, Guatemala

GHF is leading efforts to save the Cradle of Maya Civilization- Mirador Basin, which is Central America's last major jaguar habitat and contains the oldest and largest Maya pyramids and the last remaining major tract of native tropical rainforest. Over \$580,000 was raised this year from the Richard and Rhoda Goldman Fund, the Draper Foundation, the Swift Foundation, the Townshend Family Foundation and GHF Trustees. Our Partner in Conservation, the National Geographic Society will broadcast a one-hour special on Mirador Basin and feature the GHF-sponsored project in March-April 2004 television programming and in the renowned National Geographic magazine.

Global Heritage Fund has been working closely with the Foundation for Anthropological Research and Environmental Studies (FARES) and our partners in Guatemala and internationally to help formally establish the legal and institutional framework for Mirador Basin National Monument. In a collaborative process which is including the communities and logging concession, GHF's focus is formal establishment of the Mirador Basin National Monument integrating five key components:

1. National and International Protection
2. Archaeological Conservation
3. Nature and Wildlife Conservation
4. Park Rangers and Visitor Services
5. Ecotourism and Community Development

In the past year, Mirador Basin has received the formal support of the government of the Republic of Guatemala including the Ministers of Environment, Culture, Tourism and Finance, along with the President. Mirador Basin is now Guatemala's #1 new UNESCO World Heritage nomination. Community support, despite entrenched logging interests, has been surprisingly strong. The mayor along with half the adult population of the largest community of Mirador Basin signed a letter in September 2003 to the President of Guatemala supporting the Mirador Basin project.

The Inter-American Development Bank (IDB) and the World Bank have pledged their support for Mirador Basin along with leading NGOs in Guatemala such as FundaSelva, founded by CI Board Member Nini Berger, which has made a major financial pledge for scientific research on the Mirador Basin biosphere and wildlife. Guatemala's Tropical Rainforest Foundation and the Novella Foundation are also supporting community development and stakeholder negotiations to help bring a long-term solution for the people of the Peten in communities surrounding Mirador Basin.

Support for Mirador Basin from U.S. donors is now extremely critical as large swaths of the Maya Biosphere are burning each year, causing irreparable environmental damage. In just the last two years, we have already lost over ten percent of forests within the Mirador Basin Special Protected Area.

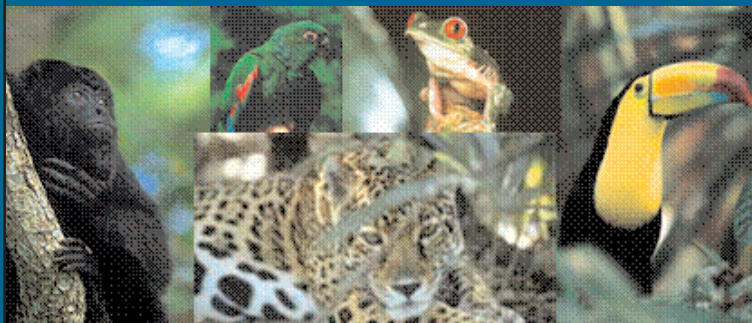
Master Conservation Planning

GHF has co-developed a comprehensive Master Conservation Plan (MCP) for Mirador Basin to provide a living framework to guide conservation of archaeological and cultural heritage sites in context of their urban and natural surroundings, as well as to identify potential economic opportunities for sustainable tourism and private enterprise to generate additional funding and support for long-term conservation.

Nature and Wildlife Protection

In partnership with FARES and the Richard and Rhoda Goldman Fund, GHF has established a Mirador Basin Park Service providing training and

a new park headquarters with visitor center to protect against illegal logging, looting, poaching and destruction of the natural and cultural heritage.



Before

The engine for sustainable tourism, long-term protection and community development is based on the twenty-six ancient Maya cities of Mirador Basin, including four of the largest and oldest Maya cities in the Americas- El Mirador, Tintal, Nakbe and Xuhnal. GHF funding is supporting world-class archaeological conservation, consolidation, research, restoration and hi-tech roofing structures for the protection of Mirador Basin's unique ancient Maya temples, pyramids, residential complexes and monumental stucco sculptures. GHF funding has helped enable conservation in 2003 for:

- **El Mirador**- Completed excavation, conservation and structural protection for Structure 34 (below), Casabel and La Muerta complexes.
- **El Danta**- Completed surveying and total station mapping using advanced laser system of El Danta pyramid complex, the largest and oldest Mayan pyramid in the Americas. GHF co-funded El Danta survey and mapping with National Geographic Society.
- **La Florida**- Conservation and quality assessment of tourism impact and environmental deterioration after one year of exposure. This provided our first assessment of tourism impact at the most visited site in Mirador Basin.
- **Training and Capacity**-Building- Excavation of Structure 34 revealed 30-foot stucco monumental sculpture previously unseen

in the Maya world. GHF sponsored the conservation of Structure 34 and construction of an advanced UV polycarbonate roofing system to provide long-term protection to its sensitive stucco sculptures providing a model for all future conservation of Mirador Basin's unique Preclassic monumental sites and sculptures. This year the GHF program trained over 40 local community members from Mirador Basin's Gateway Communities providing both on-the-job and classroom training.

Saving Mirador Basin's incredible archaeology is critical to attracting the necessary tourism and financial support to enable long-term nature and wildlife conservation and protection for over 525,000 acres of wilderness and wildlife habitat.

Mirador Basin- Leaders in Conservation

None of the progress at Mirador Basin would be possible without the decades of dedication and professional experience of Dr. Richard Hansen, Project Director of the Foundation for Anthropological Research and Environmental Studies (FARES) and his Guatemalan colleagues and friends. With a deep love for Guatemala, its history and people, he is a true professional leading world-class archaeology, conservation and community-building in the most difficult of environments.



After

Archaeological Conservation

Photos: El Mirador Before and After' - GHF-sponsored conservation by FARES of the collapsing Structure 34 temple and monumental sculptures, the oldest known standing building in the Maya world. Note world-class consolidation and advanced UV Polycarbonate roofing designed by Boeing engineers to protect delicate Preclassic Maya stucco sculptures.

Advocacy and Outreach

GHF Advocacy and Outreach Program produced the GHF Video Saving the Cradle of Maya Civilization and a professional documentary on Mirador Basin to be aired on Guatemalan television to educate and gain public support for Guatemala's Yellowstone

Chavín de Huántar, Peru

Chavín Artifact Conservation

Grant Proposal Summary

Global Heritage Fund (GHF) is requesting urgently needed funding for high-priority scientific conservation of Chavín artifacts which are currently being looted and neglected throughout the site, town and region of Chavín de Huántar in Huaraz, Peru. GHF is seeking support for \$14,680 a year for two years (\$29,360) for the complete inventory, cleaning and conservation of the entire collection of Chavín artifacts now stored in numerous storage areas, homes and tool sheds at Chavín. GHF estimates that there are over six hundred (600) sculptures, ceramics and archaeological artifacts at risk.

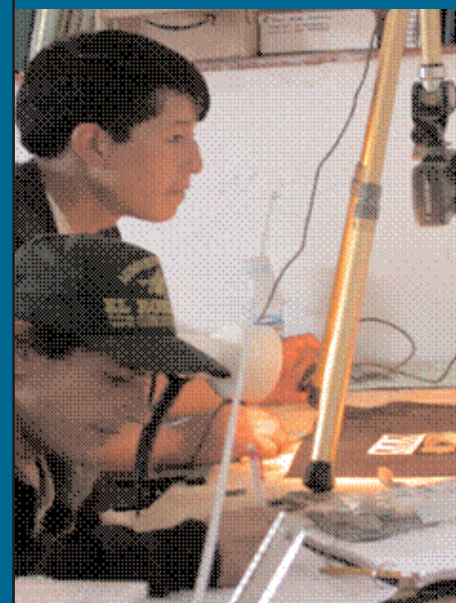
New support will enable the Chavín Conservation Team GHF has been training over the past two years at Chavín to complete emergency consolidation and conservation, inventory and cataloguing of the most important archaeological artifacts of the Chavín civilization, thought to be the earliest and most developed in Peru's rich history, almost 2,000 years before the Inca.

A new National Museum of Chavín is to be constructed in 2006 in the town of Chavín that will become a major tourism center for this poor region of Peru. The artifacts conserved by your support will be the primary collections and interpretation used by the museum, in combination with Chavín artifacts at the National Museum and Museum of the University of San Marco in Lima. This two-year program will ensure the survival and conservation of these priceless sculptures, ceramics and archaeological materials from the Chavín period, and provide the core collection for the future museum.

In the past year, GHF has worked to help in scientific excavation and conservation of the Main Circular Plaza, as well as three other monument and underground gallery complexes at Chavín de Huántar. GHF also funded emergency site conservation threatened by new road construction and found major new settlement and temple complexes across the valley from the main site of Chavín.

TRAINING AND CAPACITY-BUILDING

GHF provides classroom and on-site training of local people in conservation who can be engaged in a site's long-term preservation. At Chavín de Huántar in Peru, GHF undertook emergency conservation for an entire new ancient city found last year in the construction of a new road. GHF mobilized an international team for excavation, protection and conservation of this amazing newly found Cradle of Civilization. GHF trained twelve (12) local Chavinese in archaeological conservation and provided funding for salaries to work in emergency conservation of the site and artifact conservation.



GHF support has trained ten (10) local Chavín conservators in professional conservation in Trujillo at the university, and then supported on-site training by a world-class stone conservator from Cuzco over a three-month period. GHF Conservation Team members will undertake a one-month training at the National Museum in Artifact Conservation for Ceramics and Stone, then return to the town of Chavín to undertake the challenge of cataloguing and conserving over 600 priceless artifacts scattered throughout the region.

This support will enable the Chavín Conservation Team to accomplish the following activities to save the endangered Peruvian and world heritage of Chavín de Huáitar:

Primary Activities – Two Years

- 1.** Training of Chavín Conservation Team at National Museum and On-Site
- 2.** Conservation of Chavín Artifacts (approximately 6-800)
- 3.** Consolidation, Conservation, Cataloguing and Interpretation
- 4.** Security for Storage and Laboratory

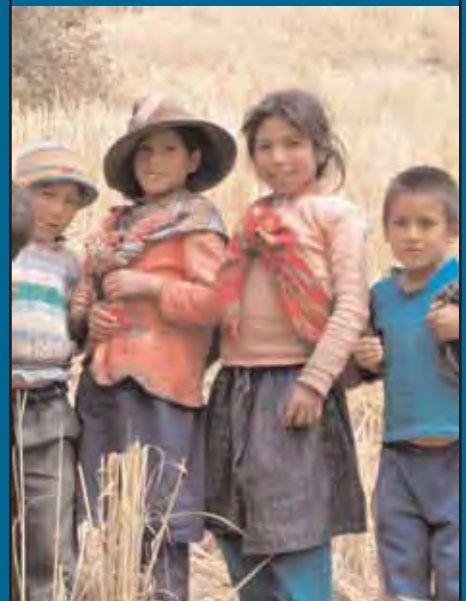
100% of funding will be used exclusively for local labor and materials.

This will support post-excavation conservation of artifacts at the local conservation lab, with an emphasis on stone and ceramics excavated in the coming years from Chavin, providing a valuable resource to archaeologists exploring its ancient history. GHF needs the support for these critically needed Peruvian conservators for approximately two years.

After two years, we expect the Peruvian conservation teams to become self-sufficient and capable of unsupervised conservation. Not only will new funding provide year round employment to locals, but it will also open the doors for Chavín artifacts, that are scattered across Peru in many locations, mostly in backyards and storage sheds, to return to a secure, protected, local museum for professional conservation and exhibit. This museum, its artifacts the magnificent site of Chavín de Huáitar will bring many long-term economic benefits to the people of this poor region of Peru.

ECONOMIC DEVELOPMENT

GHF's primary goal in conservation of world heritage sites is providing economic opportunities and igniting new engines for growth for developing countries and their communities around GHF Epicenters. By providing training and education, direct employment in conservation and promoting Chavín de Huáitar to leading travel companies, GHF works to build a Cycle of Success, bringing long-term benefits in job creation and sustainable conservation.



Lijiang Ancient Town, China

Global Heritage Fund focused its initial conservation work in Lijiang Ancient Town on ensuring the completion and approval of a world-class Master Conservation Plan (MCP). This plan will assist the Lijiang government to ensure protection and well-planned management of this irreplaceable UNESCO World Heritage site's native living' and built cultural heritage.

Based on the conservation priorities established in the Master Conservation Plan, GHF established the Lijiang Epicenter Trust in 2002 as a matching co-investment with the Chinese government to fund and manage conservation of two hundred (200) poverty and low-income ancient Naxi family residences in the Core and Protected Areas. The Lijiang Epicenter Trust is the focus of a major joint effort with the Lijiang Ancient Town Management Committee to reverse the steep losses of Ancient Lijiang's invaluable cultural heritage and stem the exodus of native Naxi families from the ancient Core and Protected Areas.

Lijiang's First Master Conservation Plan

In the past two years, GHF and the Lijiang Ancient Town Management committee have co-funded and co-developed a 350-page architectural and urban design Master Conservation

Plan with the technical assistance of Shanghai Tongji University. This new Master Conservation Plan is being integrated into both the Lijiang County and New Town plans and approvals, and has already had direct positive results in the past two years:

1. Promoted Lijiang Ancient Town to full City status with its own mayor reporting directly to the Vice Governor of Lijiang County. UNESCO World Heritage status has been reaffirmed and major new central government (Beijing) funding for infrastructure improvements have been secured (sewers, water, utilities, roadway and parks). The new Master Conservation Plan provides current and future land use planning, detailed guidelines for zoning, construction regulations, preservation and authentic restoration of Lijiang's architecture.

2. Achieved far-reaching government and community approvals for large-scale demolition and relocation of recently-built high-rise, modern concrete commercial buildings in the Core Area and Northern Gateway.

3. Established a scientific planning and urban design process with new strict regulations on construction, building codes, signage, and architectural restoration in the Core and Protected Areas.

CONSERVATION PLANNING

GHF has co-developed a 350-page architectural and urban design Master Conservation Plan with the technical assistance of Shanghai Tongji University. This new Master Conservation Plan is being integrated into both the Lijiang County and New Town plans and approvals, and has already had direct positive results reversing destruction, protecting endangered community and residential buildings and removing unsuitable modern construction within the Core and Protected Areas.

GHF CONSERVATION TRUST

GHF's Lijiang Conservation Trust enables matching co-investment with the Chinese government and Lijiang residents to fund restoration and conservation of two hundred (200) poverty and low-income ancient Naxi family residences in the Core and Protected Areas.



Before

4. Completion and approval of Lijiang's first Master Conservation Plan (MCP) which has firmly established key new regulations, conservation priorities and milestones for the next fifty years for Lijiang Ancient Town. Developed over a 16 month intensive effort led by Dr. Nancy Shao of Shanghai Tongji University, Urban Planning and Design Institute, a comprehensive master plan was produced, containing over 120 architectural, planning and urban design illustrations to the highest international standards. Prior to GHF's involvement, Lijiang Ancient Town lacked any similar documents detailing conservation, management, land use, architectural heritage, building regulations or buffer zones.

The innovative Lijiang Epicenter Trust, one of the first of its kind in China, was established to stimulate conservation by all Lijiang native Naxi families in authentic restoration of their ancient residences. Under a unique GHF Epicenter Trust agreement, GHF and the Lijiang government provide equal matching subsidies to qualified low-income and poverty-level community families to assist in the additional costs of authentic Naxi-style restoration of ancient residences using traditional construction techniques and building materials.

As of June 2003, the Lijiang Epicenter Trust has completed authentic restoration of fourteen (14) ancient residences with an additional twenty-two (22) currently in-progress.

The Lijiang Epicenter Trust has provided thirty-six (36) micro-loans and grants for low-income and poverty level residents to assist them in undertaking the costly preservation and authentic restoration work needed to restore the Ancient Town.

The Lijiang Epicenter Trust is the first accountable and transparent preservation incentive fund administered by a private-public management committee in China which approves and reviews all conservation work and distribution of private-public (GHF-Lijiang Government) matching funds to approved authentic restoration projects by qualified local families of historically significant ancient Naxi residences.

The Trust's Management Committee includes community leaders, the Lijiang Government, Co-Directors of the Nature Conservancy Yunnan, UNESCO World Heritage Centre Asia Pacific and GHF. All work must be pre-approved and meet traditional architectural and historic preservation standards, with results documented twice each year.



After



Before



After



Mirador Basin, Guatemala



Chavin de Huantar, Peru



Lijiang Ancient Town, China

GHF Advocacy and Outreach

GHF believes that the destruction of our world heritage sites cannot be successfully addressed without increasing international awareness by governments, international agencies, businesses and citizens. GHF's five-year campaign *Saving Our Global Heritage* is our answer to this challenge. The campaign is a combination of international events and fundraisers, marketing materials, including the professionally-produced GHF Videos featured on the Saving Our Global Heritage DVD, and ongoing advocacy work with governments. We work in concert with our conservation partners to lobby for greater enforcement and implementation of new conservation policies. Events held in 2003 included *Chavñ de Huátar en los Fundamentos de la Historia*

Peruana (29 de enero de 2004) in Lima, Peru and *Saving Our Global Heritage –The Art and Science of Conservation* (November 18-19) in San Francisco, USA.

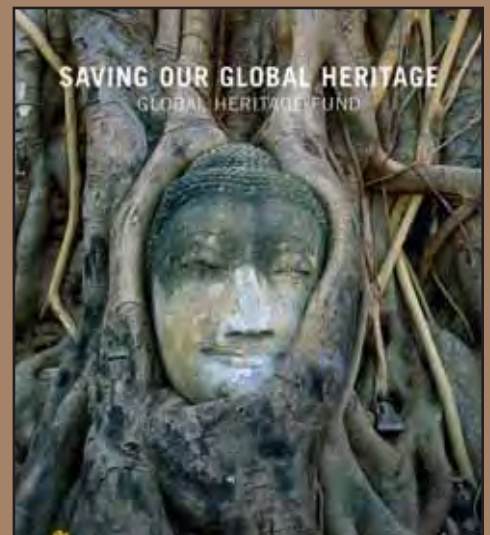
GHF Publications

Book:

SAVING OUR GLOBAL HERITAGE

In 2003, the GHF book, **Saving Our Global Heritage**, was completed for publication. With more than 100 stunning color photos of the world's most important archaeological heritage sites, the 240-page hardcover book describes the history, culture and urgent conservation needs of each site.

Promoting an understanding of culture and history in countries in Asia, the Americas, Europe, the Middle East and Africa, *Saving Our Global Heritage* also showcases proven successes in world-class conservation work. Readers will understand the importance of preserving these last remnants of ancient civilizations as 'living' museums and centers for positive and sustainable development in local communities.





DVD:

SAVING OUR GLOBAL HERITAGE

In 2003, four more video conservation features were filmed. These features will be published on the 2004 DVD Collection: *Saving Our Global Heritage*.

LIJIANG ANCIENT TOWN, CHINA
GHF Master Conservation Planning and Historic Restoration

MIRADOR BASIN, GUATEMALA
Saving the Cradle of Civilization
Mirador Basin: Adventure in Conservation

PIEDRAS NEGRAS, GUATEMALA
Saving the Heart of the Mayan World



Ways to Give

Every gift counts. You can help us protect the most important Global Heritage sites in developing countries. From a one-time contribution to a planned multi-year gift or endowment, there are many ways to support GHF.

BECOME A MEMBER

When you become a member of the Global Heritage Fund, you become a part of our efforts to preserve and protect the most threatened cultural heritage sites around the world.

MAKE A DONATION

The Global Heritage Fund works hard to ensure that your donation supports the conservation of cultural heritage sites around the world. 90% of donations go directly to fund preservation and restoration projects around the world. A gift of \$50 or more entitles you to the benefits of membership!

MAKE A GIFT OF SECURITIES

You may be eligible for a tax deduction equal to the full fair market value of your stock, avoiding capital gains tax on the stock's increased value.

CONTRIBUTE REAL ESTATE OR LIFE INSURANCE

By contributing a gift of real estate or life insurance, you are able to enjoy the benefits of your property during your lifetime, while having made a significant difference to global heritage preservation. Rewards may include regular income

payments, income tax charitable deduction receipt, reduction or elimination of federal estate taxes and/or capital gains taxes.

REMEMBER GHF IN YOUR WILL

You will leave a lasting legacy for future generations to enjoy when you make a bequest to the Global Heritage Fund. Remembering GHF as your beneficiary also ensures that your donation will not be included in your estate for tax purposes.

ASK YOUR EMPLOYER TO MATCH YOUR GIFT

Your employer might match your charitable donations, multiplying the impact of your gift. To find out more about whether or not your company participates, please contact your human resources office.

PARTICIPATE IN WORKPLACE GIVING

GHF has programs to help you and your company support Workplace Giving.

Please contact our Development Department for more information.

GLOBAL HERITAGE FUND

625 Emerson Street, Suite 200 Palo Alto, CA 94301

T (650) 325-7520 **F** (650) 325-7520 **E** gift_planning@globalheritagefund.org

PLEASE NOTE: The information provided is not intended as tax or legal advice.

Please consult a qualified financial or legal advisor for information regarding the financial implications of donating to Global Heritage Fund.





Photos:

Right: Asif Khan Tomb, Pakistan

Above: Detail, Konarak Sun Temple, India

GLOBAL HERITAGE FUND

625 Emerson Street

Suite 200

Palo Alto CA

94301 USA

P. 650-325-7520

F. 650-325-7511

info@globalheritagefund.org

www.globalheritagefund.org

